



PanelView Plus 6 Specifications

Catalog Numbers 2711P-K7C4Dx, 2711P-T7C4Dx, 2711P-B7C4Dx, 2711P-K7C4Ax, 2711P-T7C4Ax, 2711P-B7C4Ax, 2711P-K10C4Dx, 2711P-T10C4Dx, 2711P-B10C4Dx, 2711P-K10C4Ax, 2711P-T10C4Ax, 2711P-B10C4Ax, 2711P-K12C4Dx, 2711P-T12C4Dx, 2711P-B12C4Dx, 2711P-K12C4Ax, 2711P-T12C4Ax, 2711P-B12C4Ax, 2711P-K15C4Dx, 2711P-T15C4Dx, 2711P-B15C4Dx, 2711P-K15C4Ax, 2711P-T15C4Ax, 2711P-B15C4Ax, 2711P-K4M5A8, 2711P-K4M5D8, 2711P-K4M20A8, 2711P-K4M20D8, 2711P-K4C5A8, 2711P-B4C5A8, 2711P-K4C5D8, 2711P-B4C5D8, 2711P-K4C20A8, 2711P-B4C20A8, 2711P-K4C20D8, 2711P-B4C20D8, 2711P-K6M5A8, 2711P-T6M5A8, 2711P-B6M5A8, 2711P-K6M5D8, 2711P-T6M5D8, 2711P-B6M5D8, 2711P-K6M20A8, 2711P-T6M20A8, 2711P-B6M20A8, 2711P-K6M20D8, 2711P-T6M20D8, 2711P-B6M20D8, 2711P-K6C5Ax, 2711P-T6C5Ax, 2711P-B6C5Ax, 2711P-K6C5Dx, 2711P-T6C5Dx, 2711P-B6C5Dx, 2711P-K6C20Ax, 2711P-T6C20Ax, 2711P-B6C20Ax, 2711P-K6C20Dx, 2711P-T6C20Dx, 2711P-B6C20Dx, 2711PC-K4M20D8, 2711PC-B4C20D8, 2711PC-T6M20D8, 2711PC-T6C20D8, 2711PC-T10C4D8

| Topic | Page |
|--|------|
| Summary of Changes | 2 |
| Environmental Specifications | 2 |
| Certifications | 3 |
| PanelView Plus 6 - 700...1500 Terminals | 4 |
| PanelView Plus 6 - 400 and 600 Terminals | 7 |
| PanelView Plus 6 Compact Terminals | 10 |
| External Power Supply | 12 |
| HMI Software | 14 |
| Communication Cables | 15 |
| Migration Hardware | 17 |
| Additional Resources | 18 |

PanelView™ Plus 6 terminals are used for applications with a need to monitor, control, and display information graphically, allowing operators to quickly understand the status of their application. All PanelView Plus 6 applications are programmed with FactoryTalk® View Studio for Machine Edition (ME) software and have FactoryTalk View ME Station (runtime) software that is installed on each terminal.

This family provides a broad range of rugged terminals that provide these features:

- Premier integration with the Integrated Architecture™ platform
- Scalable 4-inch to 15-inch displays with touch screen, keypad, or both for input
- Common development software
- Real-time monitoring of a terminal's displays via a web browser (7-inch to 15-inch displays)

Use this document along with the Visualization Solutions Selection Guide, publication [VIEW-SG001](#), to make decisions on the visualization solutions that are best suited for your system requirements.

LISTEN.
THINK.
SOLVE.



Summary of Changes

This publication contains new and updated information as indicated in the following table.

| Topic | Pages |
|--|------------|
| Updated the power supply catalog number. | Throughout |
| Updated the Vibration line in the Environmental Specifications table for the power supply. | 12 |
| Updated the Technical Specifications and Dimensions tables for the power supply. | 13 |
| Added catalog numbers for the new SDHC cards. | 4...4 |

Environmental Specifications

The environmental certifications in [Table 1](#) apply to these PanelView Plus 6 terminals:

- PanelView Plus 6 - 700...1500 terminals including logic, communication modules, and display modules
- PanelView Plus 6 - 400 and 600 terminals
- PanelView Plus 6 Compact 400, 600, and 1000 terminals

Table 1 - Environmental Specifications - PanelView Plus 6 Terminals

| Attribute | 2711P, 2711PC |
|---|--|
| Temperature, operating | 0...55 °C (32...131 °F) |
| Temperature, nonoperating | -25...+70 °C (-13...+158 °F) |
| Heat dissipation 400, 600 700, 1000, 1250, 1500 | 85 BTU/hr 240 BTU /hr |
| Relative humidity | 5...95% noncondensing (5...90% noncondensing only for low reflective terminal, catalog number 2711P-B4C20D8-LR) |
| Vibration | 10...57 Hz, 0.012 peak-to-peak displacement 57...500 Hz, 2 g peak acceleration |
| Altitude, operating | 2000 m (6561 ft) |
| Shock, operating | 15 g at 11 ms |
| Shock, nonoperating | 30 g at 11 ms |
| Enclosure ratings 400 and 600 700...1500 | NEMA/UL Type 12, 13, 4X (indoor use only), and IEC IP66 NEMA/UL Type 12, 13, 4X (indoor use only) ⁽¹⁾ , and IEC IP54, IP65 |
| Airborne contaminants | For PanelView Plus 6 conformal-coated PCBA level products with catalog numbers that end in K, these specifications apply: ANSI/ISA S71.04 - 1985 Severity Level G3 EN60654-4: 1998 Class 3 |

(1) The 2711P-RDT12H is rated for NEMA 4x Outdoor use.

Certifications

The certifications in [Table 2](#) apply to these PanelView Plus 6 terminals:

- PanelView Plus 6 - 700...1500 terminals including logic, communication modules, and display modules
- PanelView Plus 6 - 400 and 600 terminals
- PanelView Plus 6 Compact 400, 600, and 1000 terminals

Table 2 - Certifications - PanelView Plus 6 Terminals

| Certification ⁽¹⁾ | 2711P, 2711PC |
|------------------------------|--|
| c-UL-us | cULus Listed Industrial Control Equipment for use in Hazardous Locations (E10314) per standards ANSI / ISA 12.12.01 and CSA C22.2 No. 213. rated: <ul style="list-style-type: none"> • Class I, Div 2, Groups A, B, C and D • Class II, Div 2 Groups F and G • Class III Hazardous Locations Enclosure type ratings per UL50 and CSA C22.2 No. 94.2-07. |
| CE (EMC) | European Union 2004/108/EC EMC Directive, compliant with: <ul style="list-style-type: none"> EN 61000-6-2; Industrial Immunity EN 61000-6-4; Industrial Emissions |
| CE (LVD) | European Union 2006/95/EC Low Voltage Directive, compliant with: <ul style="list-style-type: none"> EN 61131-2; Programmable Controllers |
| RMS or C-Tick | Certified <ul style="list-style-type: none"> Australian Radiocommunications Act, compliant with: AS/NZS CISPR 11; Industrial Emissions |
| RoHS | China RoHS, Turkey RoHS, European RoHS |
| KCC | Certificate of compliance |
| Marine ⁽²⁾ | Components that are identified as marine-certified meet the requirements of one or more marine societies. For marine-certified components, refer to the Product Certification link below this table. |

(1) When marked on product or otherwise declared. See the Product Certifications page at <http://www.rockwellautomation.com/rockwellautomation/certification/overview.page> for Declarations of Conformity, Certificates, and other certification details.

(2) The touch and combination keypad/touch versions of the 700 and 1000 display modules and all logic modules are marine certified.

PanelView Plus 6 - 700...1500 Terminals

The PanelView Plus 6 - 700...1500 terminals use modular components that allow for flexible configuration, installation, and upgrades. Factory-assembled terminals, with a display module and logic module, are available as one catalog number or as separate components for field installation. Optional communication modules can be ordered for additional network communication.



The field-replaceable 6.5, 10.4, 12.1, and 15.1-in. flat-panel color displays come with keypad, touch screen, or keypad/touch-screen input. Other display options are available to meet more stringent environmental conditions:

- High-bright display module for outdoor applications
- Conformal-coated displays
- Marine-certified displays and logic modules
- Displays with built-in antiglare overlays

For a complete listing of catalog number selections, refer to the Visualization Solutions Selection Guide, publication [VIEW-SG001](#).

The high-performance logic module runs the Windows CE 6.0 operating system, that allows you to run HMI applications with the ability to also access the desktop. For users with more complex application requirements, the platform and logic module can be ordered with optional, extended features and file viewers.

Table 3 - Logic Module Features

| Features | Description |
|-------------------------------|---|
| High memory capacity | 512 MB RAM, 512 MB nonvolatile memory (approx. 79 MB free user memory) |
| Power input | AC or DC |
| Network interface | For optional Ethernet, DH+™, DH-485, or ControlNet communication module |
| Communication ports | Ethernet, RS-232 serial |
| USB ports | 2 USB host ports for connecting a USB mouse, keyboard, printer, and USB flash drives that are hot swappable |
| Secure Digital (SD) card slot | Hot-swappable card slot supports 1784-SDx and 1784-SDHCx SD cards for transferring files, upgrading firmware, or logging data |
| Operating system | <div data-bbox="162 1470 487 1680"> <p>Optional Extended Features</p> </div> <p>All terminals run the Windows CE 6.0 operating system (OS) providing OS functionality that is needed for most users needs:</p> <ul style="list-style-type: none"> • FTP server • VNC client/server • PDF reader • Active X controls • Third-party device support <p>Additional functionality is available by ordering terminals with optional, extended features:</p> <ul style="list-style-type: none"> • Internet Explorer web browser • Remote desktop connection • Media player • Microsoft® file viewers for PowerPoint, Excel, and Word • WordPad text editor |
| FactoryTalk View software | <ul style="list-style-type: none"> • FactoryTalk View Machine Edition Station runtime, version 6.0 or later, is preloaded and activated on each terminal • Single license support for FactoryTalk ViewPoint software, version 1.2 or later, gives remote users access to a terminal's displays via standard web browser • HMI applications are developed with FactoryTalk View Studio for Machine Edition software, which is purchased separately |
| Reset and default switches | Provide easy access to diagnostic and repair operations |

Technical Specifications

[Table 4](#) provides technical specifications for PanelView Plus 6 - 700...1500 terminals.

Table 4 - Technical Specifications - PanelView Plus 6 - 700...1500 Terminals

| Attribute | 700 Color ⁽²⁾ 2711P-K7C4Dx, 2711P-T7C4Dx, 2711P-B7C4Dx, 2711P-K7C4Ax, 2711P-T7C4Ax, 2711P-B7C4Ax | 1000 Color ⁽²⁾ 2711P-K10C4Dx, 2711P-T10C4Dx, 2711P-B10C4Dx, 2711P-K10C4Ax, 2711P-T10C4Ax, 2711P-B10C4Ax | 1250 Color ⁽²⁾ 2711P-K12C4Dx, 2711P-T12C4Dx, 2711P-B12C4Dx, 2711P-K12C4Ax, 2711P-T12C4Ax, 2711P-B12C4Ax | 1500 Color ⁽²⁾ 2711P-K15C4Dx, 2711P-T15C4Dx, 2711P-B15C4Dx, 2711P-K15C4Ax, 2711P-T15C4Ax, 2711P-B15C4Ax |
|---|---|---|---|---|
| Operator input | Keypad, Touch, or Key/Touch | Keypad, Touch, or Key/Touch | Keypad, Touch, or Key/Touch | Keypad, Touch, or Key/Touch |
| Display type | Color active-matrix TFT | Color active-matrix TFT | Color active-matrix TFT | Color active-matrix TFT |
| Display size | 6.5 in. | 10.4 in. | 12.1 in. | 15 in. |
| Display area (WxH) | 132 x 99 mm (5.2 x 3.9 in.) | 211 x 158 mm (8.3 x 6.2 in.) | 246 x 184 mm (9.7 x 7.2 in.) | 304 x 228 mm (12.0 x 9.0 in.) |
| Resolution | 640 x 480, 18-bit color graphics | | 800 x 600, 18-bit color graphics | 1024 x 768, 18-bit color graphics |
| Luminance | 300 cd/m ² (Nits) | | 300 cd/m ² (Nits) ⁽³⁾ | |
| Backlight | CCFL, 50,000 hours min at 25 °C (77 °F), field replaceable Backlight for 1250 high-bright display module is not replaceable | | | |
| Touch screen | 8-wire analog resistive Actuation: 1 million presses; operating force: 10...110 g | | | |
| Keypad description | Stainless-steel membrane Numeric, navigation, and function keys Actuation: 1 million presses; operating force: 340 g | | | |
| Keypad function keys | 22 function keys F1...F10 and K1...K12 | 32 function keys F1...F16 and K1...K16 | 40 function keys F1...F20 and K1...K20 | 40 function keys F1...F20 and K1...K20 |
| Battery (real-time clock) | Battery-backed clock timestamps critical data, accuracy is ±2 minutes per month Battery life: 4 year min at 25 °C (77 °F) Field-replaceable: cat. no. 2711P-RY2032 or equivalent CR2032 coin-cell lithium battery | | | |
| Memory | 512 MB RAM, 512 MB nonvolatile memory (approx. 79 MB free user memory) | | | |
| External storage | Secure Digital (SD) card, cat. no.1784-SDx and 1784-SDHCx, supported by hot-swappable SD card slot USB flash drives that is supported by high-speed, hot-swappable, 2.0 USB host ports | | | |
| Operating system | Windows CE 6.0 operating system with or without extended features and Microsoft Office file viewers | | | |
| Software | FactoryTalk View Machine Edition software, version 6.0 or later FactoryTalk ViewPoint software, version 1.2 or later | | | |
| Communication ports | Ethernet (10/100 Mbps, Auto-MDI/MDI-X), RS-232, (2) USB host, Network interface for optional Ethernet, DH+/-DH-485, or ControlNet (scheduled or unscheduled) communication module | | | |
| Input voltage, DC | 18...32V DC (24V DC nom) | | | |
| Power consumption, DC | 70 W max (2.9 A at 24V DC), 39 W typical (1.6 A at 24V DC) | | | |
| Recommended external power supply | Cat. No. 1606-XLE120E, safety extra low voltage (SELV) or protected extra-low voltage (PELV) power supply for 700...1500 DC-powered terminals; 100...240V AC, 250VA max | | | |
| Input voltage, AC | 100...240V AC, 50...60 Hz | | | |
| Power consumption, AC | 160VA max, 65VA typical | | | |
| Weight, approx ⁽¹⁾ | Keypad: 1.8 kg (4.1 lb) Touch: 1.7 kg (3.7 lb) | Keypad: 2.8 kg (6.2 lb) Touch: 2.5 kg (5.6 lb) | Keypad: 3.4 kg (7.5 lb) Touch: 3.2 kg (7.0 lb) | Keypad: 4.5 kg (9.9 lb) Touch: 4.2 kg (9.2 lb) |
| Dimensions (HxWxD), approx ⁽¹⁾ | Keypad: 193 x 290 x 55 mm 7.58 x 11.40 x 2.18 in. Touch: 179 x 246 x 55 mm 7.04 x 9.68 x 2.18 in. | Keypad: 248 x 399 x 55 mm 9.77 x 15.72 x 2.18 in. Touch: 248 x 329 x 55 mm 9.77 x 12.97 x 2.18 in. | Keypad: 282 x 416 x 55 mm 11.12 x 16.36 x 2.18 in. Touch: 282 x 363 x 55 mm 11.12 x 14.30 x 2.18 in. | Keypad: 330 x 469 x 65 mm 12.97 x 18.46 x 2.55 in. Touch: 330 x 416 x 65 mm 12.97 x 16.37 x 2.55 in. |
| Cutout dimensions (HxWxD) | Keypad: 167 x 264 mm 6.57 x 10.39 in. Touch: 154 x 220 mm 6.08 x 8.67 in. | Keypad: 224 x 375 mm 8.8 x 14.75 in. Touch: 224 x 305 mm 8.8 x 12.0 in. | Keypad: 257 x 390 mm 10.11 x 15.35 in. Touch: 257 x 338 mm 10.11 x 13.29 in. | Keypad: 305 x 419 mm 12.0 x 16.5 in. Touch: 305 x 391 mm 12.0 x 15.4 in. |

(1) Weights and dimensions do not include the communication module. Add 95 g (0.21 lb) to the weight for a communication module.

(2) Replace x in catalog number with an 8 or 9. For catalog numbers ending in 9, the Windows CE operating system includes extended features and file viewers; catalog numbers ending in 8 do not support these features.

(3) The 1250 high-bright display module, cat. no. 2711P-RD12H, for outdoor operations, has a luminance of 1000 cd/m² (nit). The backlight is not replaceable.

Terminal Dimensions

[Table 5](#) provides overall dimensions and cutout dimensions for the PanelView Plus 6 - 700...1500 terminals. The 1000 touch or keypad terminal is shown for reference. Other models look similar.

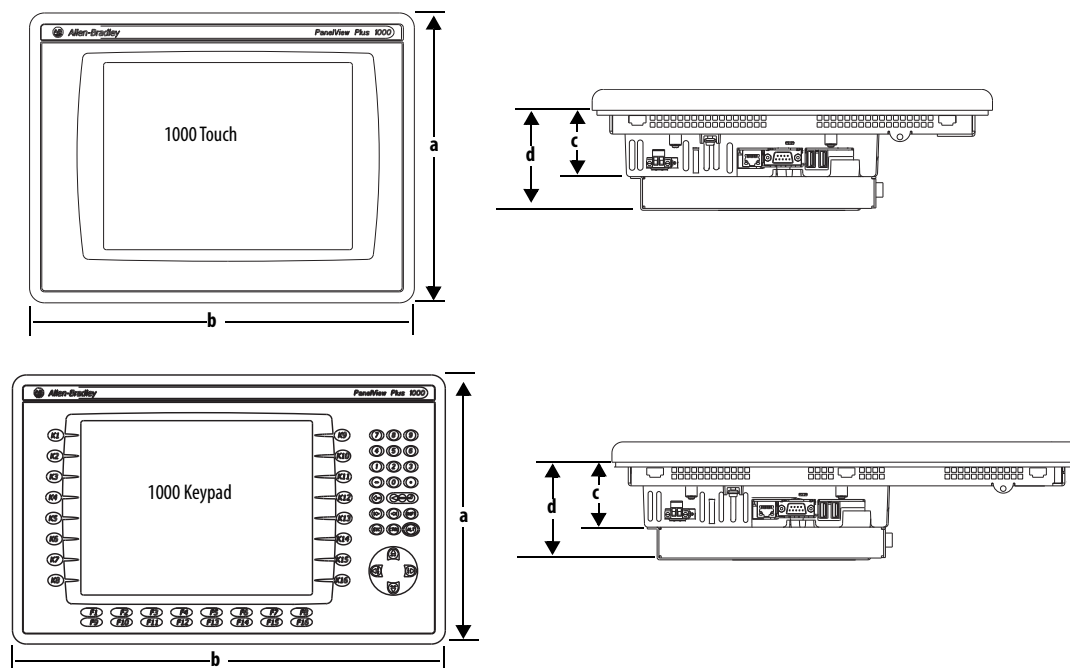


Table 5 - PanelView Plus 6 - 700...1500 Terminal Dimensions

| Terminal | Input Type | Height (a) mm (in.) | Width (b) mm (in.) | Depth (c) Display to Logic Module mm (in.) | Depth (d) Display to Communication Module mm (in.) | Cutout Height mm (in.) | Cutout Width mm (in.) |
|----------|--------------------------------|------------------------|-----------------------|--|--|------------------------------|-----------------------------|
| 700 | Keypad or keypad/touch | 193 (7.58) | 290 (11.40) | 55 (2.18) | 83 (3.27) | 167 (6.59) | 264 (10.39) |
| | Touch | 179 (7.04) | 246 (9.68) | | | 154 (6.08) | 220 (8.67) |
| 1000 | Keypad or keypad/touch | 248 (9.77) | 399 (15.72) | | | 224 (8.8) | 375 (14.75) |
| | Touch | 248 (9.77) | 329 (12.97) | | | 224 (8.8) | 305 (12.00) |
| 1250 | Keypad or keypad/touch | 282 (11.12) | 416 (16.36) | 74 (2.9) | 101 (3.99) | 257 (10.11) | 390 (15.35) |
| | Touch | 282 (11.12) | 363 (14.30) | | | 257 (10.11) | 338 (13.29) |
| | Touch (high-bright display) | 282 (11.12) | 363 (14.30) | | | 257 (10.11) | 338 (13.29) |
| 1500 | Keypad or keypad/touch | 330 (12.97) | 469 (18.46) | 65 (2.55) | 93 (3.65) | 305 (12.00) | 419 (16.50) |
| | Touch | 330 (12.97) | 416 (16.37) | | | 305 (12.00) | 391 (15.40) |

PanelView Plus 6 - 400 and 600 Terminals

The next generation PanelView Plus 6 - 400 and 600 terminals combine the display, logic, communication, and power into one base unit:

- The 400 model has a 3.5-in. color graphic display with keypad or combination key and touch input, or a grayscale display with keypad input.
- The 600 model has a 5.7-in. color or grayscale graphic display with keypad, touch screen, or combination keypad/touch-screen input.

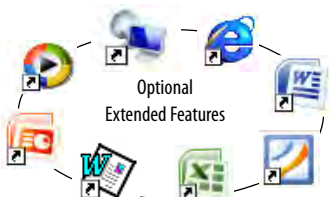


For a complete listing of catalog number selections, refer to the Visualization Solutions Selection Guide, publication [VIEW-SG001](#).

This new generation of terminals runs Windows CE 6.0 operating system similar to the 700...1500 terminals. The terminals run HMI applications but they also provide the ability to access the desktop. For users with more complex application requirements, the 600 color terminals can be ordered with optional, extended features and file viewers.

Table 6 - Terminal Features

| Features | Description |
|-------------------------------|--|
| High memory capacity | 256 MB RAM, 512 MB nonvolatile memory (approx. 73 MB free user memory) |
| Power input | AC or DC |
| Communication ports | Units are available with one of these communication options: <ul style="list-style-type: none"> • RS-232 • Ethernet and RS-232 Separate communication modules are not supported. |
| USB ports | <ul style="list-style-type: none"> • 1 USB host ports for connecting a USB mouse, keyboard, printer, and USB flash drives that are hot swappable • 1 USB device port for connecting a host personal computer |
| Secure Digital (SD) card slot | Hot-swappable card slot supports 1784-SDx SD cards for transferring files, upgrading firmware, or logging data |
| Operating system | <p>All terminals run the Windows CE 6.0 operating system (OS) providing OS functionality that is needed for most users needs:</p> <ul style="list-style-type: none"> • FTP server • VNC client/server • PDF reader • Active X controls • Third-party device support <p>Additional functionality is available for the 600 terminals by ordering terminals with these optional, extended features:</p> <ul style="list-style-type: none"> • Internet Explorer web browser • Media player • Microsoft file viewers for PowerPoint, Excel, and Word • WordPad text editor |
| FactoryTalk View software | <ul style="list-style-type: none"> • FactoryTalk View Machine Edition runtime, version 6.10 or later, is preloaded and activated on each terminal • HMI applications are developed with FactoryTalk View Studio for Machine Edition software, which is purchased separately |
| Reset and default switches | Provide easy access to diagnostic and repair operations |



Technical Specifications

[Table 7](#) provides technical specifications for PanelView Plus 6 - 400 and 600 terminals.

Table 7 - Technical Specifications - PanelView Plus 6 - 400 and 600 Terminals

| Attribute | 400 Grayscale 2711P-K4M5A8, 2711P-K4M5D8, 2711P-K4M20A8, 2711P-K4M20D8 | 400 Color 2711P-K4C5A8, 2711P-B4C5A8, 2711P-K4C5D8, 2711P-B4C5D8, 2711P-K4C20A8, 2711P-B4C20A8, 2711P-K4C20D8, 2711P-B4C20D8 | 600 Grayscale 2711P-K6M5A8, 2711P-T6M5A8, 2711P-B6M5A8, 2711P-K6M5D8, 2711P-T6M5D8, 2711P-B6M5D8, 2711P-K6M20A8, 2711P-T6M20A8, 2711P-B6M20A8, 2711P-K6M20D8, 2711P-T6M20D8, 2711P-B6M20D8 | 600 Color ⁽¹⁾ 2711P-K6C5A8, 2711P-T6C5A8, 2711P-B6C5A8, 2711P-K6C5D8, 2711P-T6C5D8, 2711P-B6C5D8, 2711P-K6C20A8, 2711P-T6C20A8, 2711P-B6C20A8, 2711P-K6C20D8, 2711P-T6C20D8, 2711P-B6C20D8 |
|-----------------------------------|---|---|--|---|
| Operator input | Keypad | Keypad or keypad/touch | Keypad, touch, or keypad/touch | Keypad, touch, or keypad/touch |
| Display type | Grayscale TFT LCD | Color active-matrix TFT | Grayscale TFT LCD | Color active-matrix TFT |
| Display size | 3.5 in. | 3.5 in. | 5.7 in. | |
| Display area (WxH) | 70 x 53 mm (2.8 x 2.3 in.) | 70 x 53 mm (2.8 x 2.3 in.) | 115 x 86 mm (4.5 x 3.4 in.) | 115 x 86 mm (4.5 x 3.4 in.) |
| Resolution | 320 x 240, 16-levels gray | 320 x 240, 18-bit color graphics | 320 x 240, 16-levels gray | 320 x 240, 18-bit color graphics |
| Brightness | 320 cd/m ² (Nits) | 320 cd/m ² (Nits) | 440 cd/m ² (Nits) | 440 cd/m ² (Nits) |
| Backlight | White LED, not replaceable; 25,000 hours min at 25 °C (77 °F) | | White LED, not replaceable; 25,000 hours min at 25 °C (77 °F) | |
| Touch screen | — | <ul style="list-style-type: none">• Analog resistive, 4-wire• Actuation: 1 million presses• Operating force: 10...110 g | <ul style="list-style-type: none">• Analog resistive, 4-wire• Actuation: 1 million presses• Operating force: 10...110 g | |
| Keypad description | <ul style="list-style-type: none">• Stainless-steel membrane• Numeric, navigation, and function keys• Actuation: 1 million presses; operating force: 340 g | | <ul style="list-style-type: none">• Stainless-steel membrane• Numeric, navigation, and function keys• Actuation: 1 million presses; operating force: 340 g | |
| Keypad function keys | 8 function keys (F1...F8) | | 10 function keys (F1...F10) | |
| Battery (real-time clock) | Battery-backed clock timestamps critical data, accuracy is ±2 minutes per month Battery life: 4 year min at 25 °C (77 °F) Field-replaceable: cat. no. 2711P-RY2032 or equivalent CR2032 coin-cell lithium battery | | | |
| System memory | 256 MB RAM, 512 MB nonvolatile memory (approx. 73 MB free user memory) | | | |
| External storage | Secure Digital (SD) card, cat. no.1784-SDx, supported by hot-swappable SD card slot USB flash drive that is supported by high-speed, hot-swappable, 2.0 USB host port | | | |
| Operating system | Windows CE 6.0 operating system with or without extended features and Microsoft Office file viewers | | | Windows CE 6.0 operating system with extended features/file viewers |
| Software | FactoryTalk View Machine Edition software, version 6.10 or later; FactoryTalk ViewPoint software is not supported on the 400 and 600 terminals. | | | |
| Communication ports | <ul style="list-style-type: none">• RS-232, 1 USB host, 1 USB device port (catalog numbers with the number 5, for example, 2711P-B4C5D8)• Ethernet (10/100 Mbps, Auto-MDI/MDI-X), RS-232, 1 USB host, 1 USB device port (catalog numbers with the number 20, for example, 2711P-B4C20D8) | | | |
| Input voltage, DC | 18...30V DC (24V DC nom); Requires the use of a Class 2 or safety extra low voltage (SELV) or protected extra-low voltage (PELV) power supply | | | |
| Power consumption, DC | 15 W max (0.6 A at 24V DC), 9 W typical (0.375 A at 24V DC) | | | |
| Recommended external power supply | Cat. no. 1606-XLE120E, SELV or PELV isolated power supply for non-isolated 400 and 600 DC-powered terminals; 100...240V AC, 250VA max | | | |
| Input voltage, AC | 100...240V AC, 50...60 Hz | | | |
| Power consumption, AC | 35VA max, 20VA typical | | | |
| Weight, approx | Keypad: 473 g (1.04 lb) Touch: — | | Keypad: 728 g (1.60 lb) Touch: 594 g (1.31 lb) | |
| Dimensions (HxWxD), approx | Without AC module Keypad: 152 x 185 x 60 mm (6.0 x 7.28 x 2.35in.) 152 x 185 x 90 mm (6.0 x 7.28 x 3.54 in.) With AC module Touch:— — | | Keypad: 167 x 266 x 68 mm (6.58 x 10.47 x 2.68 in.) 167 x 266 x 98 mm (6.58 x 10.47 x 3.86 in.) Touch: 152 x 185 x 68 mm (6.0 x 7.28 x 2.68 in.) 152 x 185 x 98 mm (6.0 x 7.28 x 3.86 in.) | |
| Cutout dimensions (HxW) | Keypad: 123 x 156 mm (4.86 x 6.15 in.) Touch: — | | Keypad: 142 x 241 mm (5.61 x 9.50 in.) Touch:123 x 156 mm (4.86 x 6.15 in.) | |

(1) Replace x in the catalog number with an 8 or 9. For catalog numbers ending in 9, for example, 2711P-T6C20D9, the Windows CE operating system includes extended features and Microsoft Office file viewers; catalog numbers ending in 8, for example, cat. no. 2711P-T6C20D8, do not support extended features and file viewers.

Terminal Dimensions

[Table 8](#) provides overall dimensions and cutout dimensions for the PanelView Plus 6 - 400 and 600 terminals.

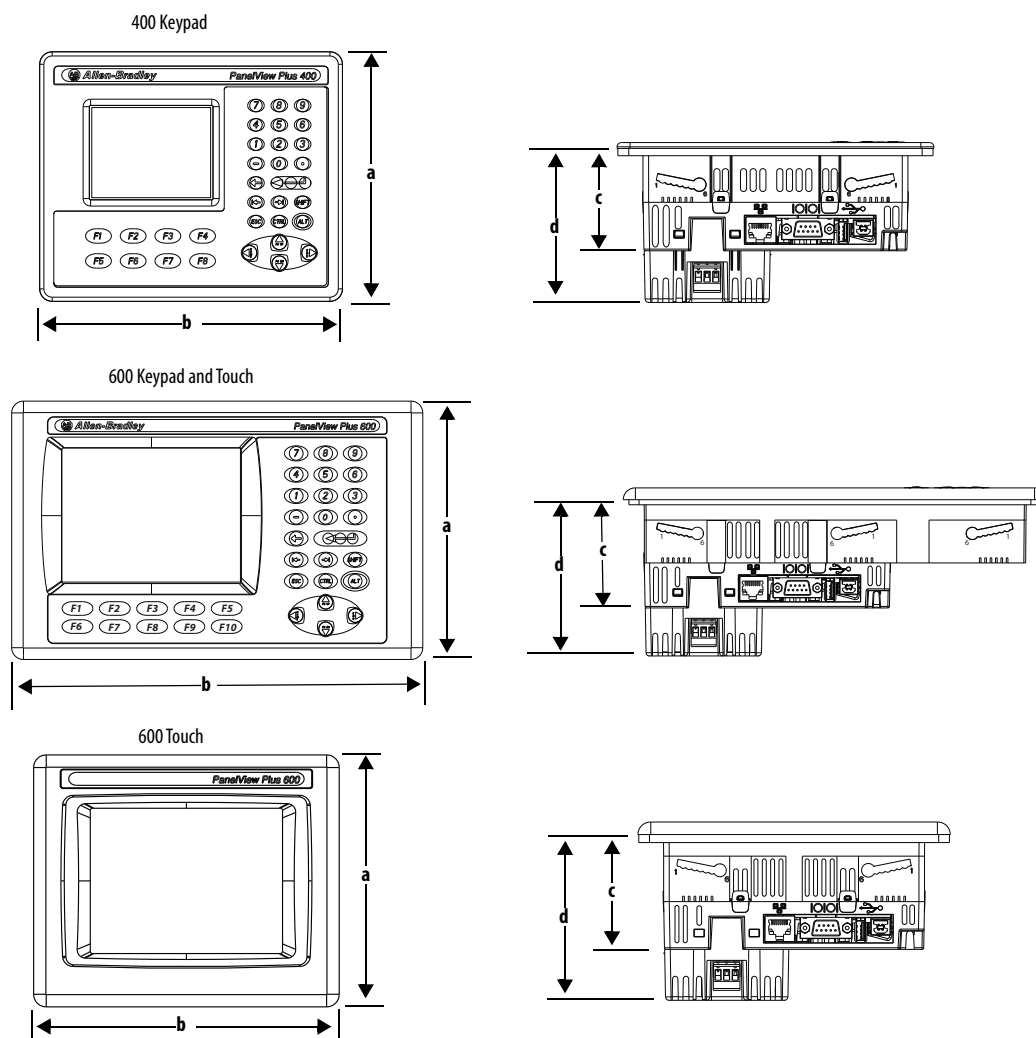


Table 8 - PanelView Plus 6 - 400 and 600 Product Dimensions

| Terminal | Input Type | Height (a) mm (in.) | Width (b) mm (in.) | Depth (c) mm (in.) | Depth (d) with AC module mm (in.) | Panel Cutout Width mm (in.) | Panel Cutout Height mm (in.) |
|----------|------------------------|------------------------|-----------------------|-----------------------|--------------------------------------|--------------------------------|---------------------------------|
| 400 | Keypad or keypad/touch | 152 (6.0) | 185 (7.28) | 60 (2.35) | 90 (3.54) | 156 (6.15) | 123 (4.86) |
| 600 | Keypad or keypad/touch | 167 (6.58) | 266 (10.47) | 68 (2.68) | 98 (3.86) | 241 (9.50) | 142 (5.61) |
| | Touch | 152 (6.0) | 185 (7.28) | 68 (2.68) | 98 (3.86) | 156 (6.15) | 123 (4.86) |

PanelView Plus 6 Compact Terminals

The PanelView Plus 6 Compact 400, 600, and 1000 terminals provide a solution for mid-size applications that require fewer displays and alarms in a FactoryTalk View ME application. These terminals are a subset of the PanelView Plus 6 family with selective hardware and software functionality. They are the preferred HMI solution for many of the CompactLogix™ controllers.



These features are the major features of the PanelView Plus 6 Compact terminals:

- Preferred HMI for CompactLogix controllers
- RS-232 serial port, Ethernet port, USB port, DC power input, and Secure Digital (SD) card slot
- Serial and Ethernet communication only
- Connection to a single controller by using either RSLinx® Enterprise software, version 5.51 or later, or KEPServer software
- 25 displays and 200 alarm messages that are supported in the FactoryTalk View Compact Machine Edition application and runtime software
- Fixed hardware configurations without the addition or replacement of modular components

For a complete listing of catalog number selections, refer to the Visualization Solutions Selection Guide, publication [VIEW-SG001](#).

Technical Specifications

[Table 9](#) provides technical specification for PanelView Plus 6 Compact terminals.

Table 9 - Technical Specifications - PanelView Plus 6 Compact Terminals

| Attribute | 400 Grayscale 2711PC-K4M20D8 | 400 Color 2711PC-B4C20D8 | 600 Grayscale 2711PC-T6M20D8 | 600 Color 2711PC-T6C20D8 | 1000 Color 2711PC-T10C4D8 |
|-----------------------------------|---|--|---|--|--|
| Operator input | Keypad | Keypad and touch | Touch | Touch | Touch |
| Display type | Grayscale TFT LCD | Color active-matrix TFT | Grayscale TFT LCD | Color active-matrix TFT | Color active-matrix TFT |
| Display size | 3.5 in. | 3.5 in. | 5.7 in. | 5.7 in. | 10.4 in. |
| Display area (WxH) | 70 x 53 mm (2.8 x 2.3 in.) | 70 x 53 mm (2.8 x 2.3 in.) | 115 x 86 mm (4.5 x 3.4 in.) | 115 x 86 mm (4.5 x 3.4 in.) | 211 x 158 mm (8.3 x 6.2 in.) |
| Resolution | 320 x 240, 16-levels gray | 320 x 240, 18-bit color | 320 x 240, 16-levels gray | 320 x 240, 18-bit color | 640 x 480, 18-bit color graphics |
| Luminance | 320 cd/m ² (Nits) | 320 cd/m ² (Nits) | 440 cd/m ² (Nits) | 440 cd/m ² (Nits) | 300 cd/m ² (Nits) |
| Backlight | White LED, not replaceable; 25,000 hours min at 25 °C (77 °F) | | White LED, not replaceable; 25,000 hours min at 25 °C (77 °F) | | CCFL, 50,000 hours min at 25 °C (77 °F), field replaceable |
| Touch screen | — | Analog resistive 4-wire; actuation 1 million presses; operating force 10...110 g | | | Analog resistive 8-wire; actuation 1 million presses; operating force 10...110 g |
| Keypad description | <ul style="list-style-type: none">Stainless-steel membraneNumeric, navigation, and function keysActuation: 1 million presses; operating force: 340 g | | — | | |
| Keypad function keys | 8 function keys (F1...F8) | | — | | |
| Battery (real-time clock) | Battery-backed clock timestamps critical data, accuracy is ±2 minutes per month Battery life: 4 year min at 25 °C (77 °F) Field-replaceable: cat. no. 2711P-RY2032 or equivalent CR2032 coin-cell lithium battery | | | | |
| Memory | 256 MB RAM, 512 MB nonvolatile memory (approx. 73 MB free user memory) | | | | 512 MB RAM, 512 MB nonvolatile memory (approx. 79 MB free user memory) |
| External storage | Secure Digital (SD) card, cat. no.1784-SDx, supported by hot-swappable SD card slot USB flash drive that is supported by high-speed, hot-swappable, 2.0 USB host port | | | | |
| Operating system | Windows CE 6.0 operating system without extended features and Microsoft Office file viewers | | | | |
| Software | FactoryTalk View Machine Edition software, version 6.10 or later; FactoryTalk ViewPoint software is not supported | | | | |
| Communication ports | Ethernet (10/100 Mbps, Auto-MDI/MDI-X), RS-232, 1 USB host, and 1 USB device port. | | | | Ethernet (10/100 Mbps, Auto-MDI/MDI-X), RS-232, 1 USB host. |
| Input voltage, DC | 18...30V DC (24V DC nom); Requires the use of a Class 2 or safety extra low voltage (SELV) or protected extra-low voltage (PELV) power supply | | | | 18...30V DC (24V DC nom) |
| Power consumption, DC | 15 W max (0.6 A at 24V DC), 9 W typical (0.375 A at 24V DC) | | | | 70 W max (2.9 A at 24V DC), 39 W typical (1.6 A at 24V DC) |
| Recommended external power supply | Cat. No. 1606-XLE120E, SELV or PELV isolated power supply; 100...240V AC, 250VA max | | | | |
| Weight, approx | 473 g (1.04 lb) | 473 g (1.04 lb) | 594 g (1.31 lb) | 594 g (1.31 lb) | 2.5 kg (5.6 lb) |
| Dimensions (HxWxD), approx | 152 x 185 x 60 mm 6.0 x 7.28 x 2.35in. | 152 x 185 x 60 mm 6.0 x 7.28 x 2.35in. | 152 x 185 x 68 mm 6.0 x 7.28 x 2.86 in. | 152 x 185 x 68 mm 6.0 x 7.28 x 2.86 in. | 248 x 329 x 55 mm 9.77 x 12.97 x 2.18 in. |
| Cutout dimensions (HxWxD) | 123 x 156 mm 4.86 x 6.15 in. | 123 x 156 mm 4.86 x 6.15 in. | 123 x 156 mm 4.86 x 6.15 in. | 123 x 156 mm 4.86 x 6.15 in. | 224 x 305 mm 8.8 x 12.0 in. |

External Power Supply

This safety extra low voltage (SELV) or protected extra low voltage (PELV), 24V DC power supply can be used to power any of the PanelView Plus 6 terminals with a DC power input. This power supply provides protection so that under normal and single fault conditions, the voltage between conductors and earth ground does not exceed a safe value.

Table 10 - Environmental Specifications - 1606-XLE120E Power Supply

| Attribute | 1606-XLE120E |
|--|---|
| Temperature, operating IEC 60068-2-1 (Test Ad, Operating Cold) IEC 60068-2-2 (Test Bd, Operating Dry Heat) IEC 60068-2-14 (Test Nb, Operating Thermal Shock) | 0...55 °C (32...131 °F) |
| Temperature, storage IEC 60068-2-1 (Test Ab, Unpackaged, Nonoperating Cold) IEC 60068-2-2 (Test Bb, Unpackaged, nonoperating Dry Heat) IEC 60068-2-14 (Test Nb, Unpackaged, nonoperating Thermal Shock) | -40...+85 °C (-40...+185 °F) |
| Relative humidity IEC 60068-2-30 (Test Db, Unpackaged, nonoperating Damp Heat) | 5...95% noncondensing |
| Vibration IEC 60068-2-6 (Test Fc, Operating) | 2 g at 17.8...500 Hz |
| Shock, operating IEC 60068-2-27 (Test Ea, Unpackaged Shock) | 15 g |
| Shock, nonoperating IEC 60068-2-27 (Test Ea, Unpackaged Shock) | 30 g |
| ESD immunity IEC 61000-4-2 | 4 kV contact discharges 8 kV air discharges |
| Radiated RF immunity IEC 61000-4-3 | 10V/m with 1 kHz sine-wave 80% AM from 30...1000 MHz |
| EFT/B immunity IEC 61000-4-4 | ±2 kV at 5 kHz on power ports |
| Surge transient immunity IEC 61000-4-5 | ±1 kV line-line (DM) and ±2 kV line-earth (CM) on AC power ports |
| Conducted RF immunity IEC 61000-4-6 | 10V rms with 1 kHz sine-wave 80% AM from 150 kHz...80 MHz |
| Enclosure type rating | None (open-style) |
| Power conductors | <div>Wire size</div> <div>Category</div> <div>12 gauge (4 mm²) max solid or stranded copper wire rated at 75 °C (167 °F) or greater 1.2 mm (3/64 in.) insulation max 1⁽¹⁾</div> |

(1) Use this conductor capacity information for planning conductor routing. Refer to Industrial Automation Wiring and Grounding Guidelines, publication 1770-4.1.

Table 11 - Certifications - 1606-XLE120E Power Supply

| Certification ⁽¹⁾ | 1606-XLE120E |
|------------------------------|--|
| c-UL-us | UL Listed Industrial Control Equipment, certified for US and Canada. See UL File E10314. UL Listed for Class, Division 2 Groups A, B, C, and D for US and Canada. |
| CE | European Union 89/336/EEC EMC Directive, compliant with: <ul style="list-style-type: none"> EN 61000-6-2; Industrial Immunity EN 61326, Meas./Control/Lab., Industrial Requirements EN 61000-6-4; Industrial Emissions European Union 73235/EEC Low Voltage Directive, compliant with: <ul style="list-style-type: none"> EN 61131-2; Programmable Controllers |
| C-Tick | Australian Radiocommunications Act, compliant with: AS/NZS 2064, Industrial Emissions |

(1) When marked. See the Product Certifications page at <http://www.rockwellautomation.com/rockwellautomation/certification/overview.page> for Declarations of Conformity, Certificates, and other certification details.

Table 12 - Technical Specifications - 1606-XLE120E Power Supply

| Attribute | 1606-XLE120E |
|------------------------------|---|
| Input Specifications | |
| Supply voltage, nom | 120V AC, 50...60 Hz, 2.05 A max 230V AC, 50...60 Hz, 1.23 A max |
| Voltage range | 100...240V AC |
| Inrush current | 10 A at 120V/230V AC, 55 °C (131 °F) |
| Interruption | Output voltage stays within specification when input drops out for 50 ms, 100V AC with max load |
| Output Specifications | |
| Output voltage, nom | +24V DC safety extra low voltage (SELV) |
| Voltage range | 24...28V DC |
| Inrush current | 25 A typical, 5 ms at V in 240V AC, 55 °C (131 °F) |
| Minimum load | 50 mA |
| Overvoltage protection | Output internally limited to 39V DC. Cycle power to re-energize. |
| Overcurrent protection | N/A |
| Leakage current | 0.6 mA rms max at rated input and output |
| Isolation voltage | 2500V AC for 5 seconds |

Table 13 - Dimensions - 1606-XLE120E Power Supply

| Attribute | 1606-XLE120E |
|----------------------------|---|
| Mounting | <ul style="list-style-type: none"> Horizontal on a DIN rail Wall or panel mount with cat. no. 1794-NM1 panel mounting kit |
| Terminal screw torque | 0.8 N•m (7 lb•in) |
| Dimensions (HxWxD), approx | 124 x 32 x 117 mm (4.88 x 1.26 x 4.61 in.) |

HMI Software

All PanelView Plus 6 terminals are configured with FactoryTalk View Studio software and have an integrated runtime system called FactoryTalk View Machine Edition Station.

Machine Edition Station runs projects developed with FactoryTalk View Studio software and is included on all PanelView Plus 6 terminals.

Two versions of FactoryTalk View Studio software support application development for PanelView Plus 6 terminals.

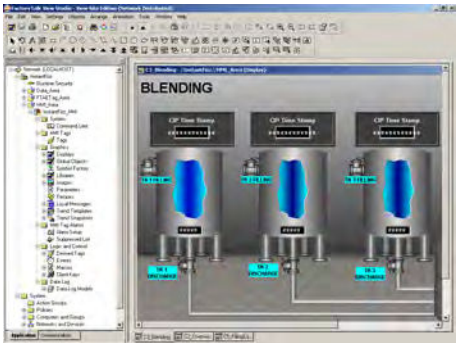


Table 14 - HMI Software for PanelView Plus 6Terminals

| Cat. No. ⁽¹⁾ | Description |
|-------------------------|---|
| 9701-VWSTMENE | FactoryTalk View Studio for Machine Edition software - Configuration software for developing and testing machine-level human machine interface (HMI) applications. Includes RSLinx® Enterprise and KEPServer Enterprise software. |
| 9701-VWSTONE | FactoryTalk View Studio software - Configuration software for developing and testing machine level and supervisory level human machine interface (HMI) applications. |

(1) Order localized versions of the software by replacing EN in the catalog number with DE for German, FR for French, JP for Japanese, or ZH for Chinese.

You can import PanelView Standard/PanelBuilder® 32 and PanelView™ e applications into FactoryTalk View Studio software as Machine Edition applications by using the Machine Edition Import Wizard. The Import Wizard steps you through a few options such as scaling to a new screen resolution size, and then converts objects, text, tags, and communication configurations to ones that are available in Machine Edition.



FactoryTalk ViewPoint software, an add-on to FactoryTalk View Studio software, allows plant managers, production supervisors, system integrators, and other key stakeholders to view and control real-time plant floor operations remotely from a web browser. FactoryTalk ViewPoint enabled displays are fully scalable and animated in the browser. The remote user can also view displays that are not the active display of the terminal.

Each PanelView Plus 6 - 700...1500 terminal contains one license that supports a single client connection to the terminal. No additional software is required. FactoryTalk ViewPoint software is not supported by the PanelView Plus 6 - 400 and 600 terminals.

For a complete list of available HMI software, visit <http://www.rockwellautomation.com/rockwellsoftware>.

Communication Cables

Table 15 through Table 20 list runtime communication cables for PanelView Plus 6 (400, 600, 700, 1000, 1250, 1500) terminals. The PanelView Plus 6 Compact terminals use the same cables as the PanelView Plus 6 - 400 and 600 terminals. All PanelView Plus 6 terminals use a standard Ethernet cable for application transfers between a computer and the terminal.

Table 15 - Communication Cables: PanelView Plus 6 Terminals to PLC-5® Controllers

| Terminal Type | PLC-5, PLC-5C, PLC-5E Port: CH0 - 25-pin RS-232 Protocol: DF1 | PLC-5, PLC-5C, PLC-5E Port: CH1/CH2 DH+ Protocol: DH+ | PLC-5E Port: CH2 Ethernet RJ45 Protocol: EtherNet/IP | PLC-5C Port: ControlNet Port Protocol: ControlNet |
|---|---|--|--|--|
| PanelView Plus 6 Compact 400, 600, 1000 | 2711-NC13 (5 m/16 ft) or 2711-NC14 (10 m/32 ft) cable (Requires DB9 to DB25 adapter) | — | 1585J-M type cable or 2711PjCBL-EX04 (4 m/14 ft) | — |
| PanelView Plus 6 400, 600 | | — | | — |
| PanelView Plus 6 700, 1000, 1250, 1500 | | Requires 2711P-RN6 or 2711P-RN6K module, with shielded twinaxial cable (1770-CD) | | Requires 2711P-RN15S or 2711P-RN15SK module, and 1786 ControlNet media |

Table 16 - Communication Cables: PanelView Plus 6 Terminals to SLC™ Controllers

| Terminal Type | SLC 5/01, 5/02, 5/03 Port: CH1 - RJ45 Protocol: DH-485 | SLC 5/03, 5/04, 5/05 Port: CH0 - 9-pin RS-232 Protocol: DF1 or DH-485 (point-to-point) | SLC 5/04 Port: CH1 Protocol: DH+ | SLC 5/05 Port: CH1 - Ethernet - RJ45 Protocol: EtherNet/IP |
|---|--|--|--|--|
| PanelView Plus 6 Compact 400, 600, 1000 | Requires 1761-NET-AIC module, and 2711-NC13 (5 m/16 ft) or 2711-NC14 (10 m/32 ft) cable | 2711-NC13 (5 m/16 ft) 2711-NC14 (10 m/32 ft) | — | 1585J-M type cable or 2711P-CBL-EX04 (4 m/14 ft) |
| PanelView Plus 6 400, 600 | | | — | |
| PanelView Plus 6 700, 1000, 1250, 1500 | Requires 2711P-RN6 module, with 1761-CBL-AS03 (3 m/10 ft) or 1761-CBL-AS09 (9 m/30 ft) cable | | Requires 2711P-RN6 or 2711P-RN6K module, with shielded twinaxial cable (1770-CD) | |

Table 17 - Communication Cables: PanelView Plus 6 Terminals to MicroLogix™ Controllers

| Terminal Type | MicroLogix™ 1400, 1500LRP Port: CH1/CH2 - 9-pin RS-232 Protocol: DF1 or DH-485 (point-to-point) | MicroLogix 1000, 1100, 1200, 1400, 1500LSP Port: CH0 - 8-pin Mini-DIN Protocol: DF1 or DH-485 (point-to-point) | MicroLogix 1100, 1400 Port: Ethernet - RJ45 Protocol: EtherNet/IP |
|---|---|--|---|
| PanelView Plus 6 Compact 400, 600, 1000 | 2711-NC13 (5 m/16 ft) or 2711-NC14 (10 m/32 ft) cable (Requires DB9 to DB25 adapter) | 2711-NC21 (5 m/16 ft) or 2711-NC22 (15 m/49 ft) | 1585J-M type cable or 2711P-CBL-EX04 (4 m/14 ft) |
| PanelView Plus 6 400, 600 | | | |
| PanelView Plus 6 700, 1000, 1250, 1500 | | | |

Table 18 - Communication Cables: PanelView Plus 6 Terminals to CompactLogix Controllers

| Terminal Type | CompactLogix Port: CH0 - 9-pin RS-232 Protocol: DF1 or DH-485 (point-to-point) | CompactLogix L35E, L23E, L32E, 1768-ENBT Port: Ethernet - RJ45 Protocol: EtherNet/IP | CompactLogix L35CR, L32C, 1768-CNB, 1768-CNBR Port: ControlNet Port Protocol: ControlNet |
|---|--|--|--|
| PanelView Plus 6 Compact 400, 600, 1000 | 2711-NC13 (5 m/16 ft) 2711-NC14 (10 m/32 ft) | 1585J-M type cable or 2711P-CBL-EX04 (4 m/14 ft) | 1786 ControlNet media |
| PanelView Plus 6 400, 600 | | | |
| PanelView Plus 6 700, 1000, 1250, 1500 | | | |

Table 19 - Communication Cables: PanelView Plus 6 Terminals to ControlLogix™ Controllers

| Terminal Type | ControlLogix Port: CH0 - 9-pin RS-232 Protocol: DF1 or DH-485 (point-to-point) | ControlLogix Communication Module: 1756-ENBT, 1756-EN2T Protocol: EtherNet/IP | ControlLogix Communication Module: 1756-CNB Protocol: ControlNet | ControlLogix Communication Module: 1756-DHRIO Protocol: DH+ |
|---|---|--|---|--|
| PanelView Plus 6 Compact 400, 600, 1000 | 2711-NC13 (5 m/16 ft) 2711-NC14 (10 m/32 ft) | 1585J-M type cable or 2711P-CBL-EX04 (4 m/14 ft) | 1786 ControlNet media | — |
| PanelView Plus 6 400, 600 | | | | — |
| PanelView Plus 6 700, 1000, 1250, 1500 | | | | Shielded twinaxial cable (1770-CD) |

Table 20 - Communication Cables: PanelView Plus 6 Terminals to Interface Modules

| Protocol | PanelView Plus 6 Comm Port 400, 600 700, 1000, 1250, 1500 | 1747-AIC | 1761-NET-AIC | | | 1761-NET-ENI |
|----------|---|---|---|--|--|--|
| | | | Port 1 (9-pin) | Port 2 (8-pin Mini DIN) | Port 3 (DH-485) | Port 2 (8-pin Mini DIN) |
| DF1 | RS-232 port All terminals | — | 2711-NC13 (5 m/16 ft) 2711-NC14 (10 m/32 ft) | 2711-NC21 (5 m/16 ft) 2711-NC22 (15 m/49 ft) Null modem required | — | 1761-CBL-AP00 (5 m/16 ft) 1761-CBL-PM02 (2 m/7 ft) 2711-CBL-PM05 (5 m/16 ft) 2711-CBL-PM10 (10 m/32 ft) |
| DH-485 | RS-232 port All terminals | — | 2711-NC13 (5 m/16 ft) 2711-NC14 (10 m/32 ft) | 2711-NC21 (5 m/16 ft) 2711-NC22 (15 m/49 ft) Null modem required | — | |
| | DH-485 port 700 . . . 1500 terminals only Requires 2711P-RN6 or 2711P-RN6K | Direct connection to single AIC with Belden 9842 cable ⁽¹⁾ | — | — | Direct connection to single AIC+ with Belden 9842 cable ⁽¹⁾ | — |

(1) Use the serial port on the PanelView Plus 6 terminal with an AIC+ module for a DH-485 network solution.

Migration Hardware

The PanelView Plus 6 platforms provide a clear migration path for replacing older terminals. When migrating to a new platform, consider both the display size and the unit size. PanelView Plus 6 terminals use the same panel cutouts as existing PanelView products, yet offer a larger display. For instance, a PanelView Plus 6, 1250 terminal with a 12.1-inch display fits into the same cutout as a PanelView 1000 or 1000e with a 10.4-inch display. When choosing a terminal with the same display size, adapter plates are used to adapt the cutout of the new terminal.

Refer to [Additional Resources on page 18](#) for publications that provide catalog number conversions and migration information for applications.

Table 21 - PanelView Plus 6 Replacement Terminals

| PanelView Standard Terminal | PanelView Plus 6 Replacement Terminal | Adapter Plate Required | Adapter Plate Cat. No. |
|--|---|------------------------|-----------------------------|
| PanelView Standard 300 or 300 Micro | None available ⁽¹⁾ | — | — |
| PanelView 550 or 600 touch | PanelView Plus 6 or PanelView Plus 6 Compact 400 keypad or keypad/touch PanelView Plus 6 or PanelView Plus 6 Compact 600 touch | No | — |
| PanelView 550 keypad PanelView 550 keypad/touch | PanelView Plus 6, 600 keypad or keypad/touch PanelView Plus 6 or PanelView Plus 6 Compact 400 keypad or keypad/touch PanelView Plus 6 or PanelView Plus 6 Compact 600 touch | No Yes | — 2711P-RAK4 |
| PanelView 600 keypad PanelView 600 keypad/touch | PanelView Plus 6, 600 keypad or keypad/touch PanelView Plus 6, 700 keypad or keypad/touch | Yes No | 2711P-RAK6 — |
| PanelView 900 keypad | PanelView Plus 6, 700 keypad or keypad/touch PanelView Plus 6, 1000 keypad or keypad/touch | Yes No | 2711P-RAK7 — |
| PanelView 900 touch | PanelView Plus 6, 700 touch PanelView Plus 6 or PanelView Plus 6 Compact 1000 touch | Yes No | 2711P-RAT7 — |
| PanelView 1000, 1000e keypad | PanelView Plus 6, 1000 keypad or keypad/touch PanelView Plus 6, 1250 keypad or keypad/touch | Yes No | 2711P-RAK10 — |
| PanelView 1000, 1000e touch | PanelView Plus 6 or PanelView Plus 6 Compact 1000 touch PanelView Plus 6, 1250 touch | Yes No | 2711P-RAT10 — |
| PanelView 1400 keypad | PanelView Plus 6, 1250 keypad or keypad/touch PanelView Plus 6, 1500 keypad or keypad/touch | Yes No | 2711P-RAK12S — |
| PanelView 1400 touch | PanelView Plus 6, 1250 touch PanelView Plus 6, 1500 touch | Yes No | 2711P-RAT12S — |
| PanelView 1400e keypad | PanelView Plus 6, 1500 keypad or keypad/touch ⁽²⁾ PanelView Plus 6, 1250 keypad or keypad/touch | Yes Yes | 2711P-RAK15 2711P-RAK12E |
| PanelView 1400e touch | PanelView Plus 6, 1500 touch ⁽²⁾ PanelView Plus 6, 1250 touch | Yes Yes | 2711P-RAT15 2711P-RAT12E |
| PanelView 1200, 1200e keypad | PanelView Plus 6, 1250 keypad ⁽²⁾ | Yes | 2711P-RAK12E |
| PanelView 1200, 1200e touch | PanelView Plus 6, 1250 touch ⁽³⁾ | Yes | 2711P-RAT12E2 |

(1) Replace the PanelView Standard 300 or 300 Micro with a PanelView Plus 6 - 400 keypad terminal by increasing the size of the current panel cutout.

(2) Adapter plate required for stud-mounted terminals.

(3) Requires modification of panel cutout.

Additional Resources

These documents contain additional information concerning related products from Rockwell Automation.

| Resource | Description |
|---|--|
| Visualization Solutions Selection Guide, publication VIEW-SG001 | Provides an overview of the visualization products, and includes catalog number selections offered by Rockwell Automation. |
| PanelView 6 Terminals User Manual, publication 2711P-UM006 | Provides information on how to install, configure, operate, and troubleshoot the PanelView Plus 6 (400, 600, 700, 1000, 1250, 1500) terminals. |
| PanelView Plus 6 Compact Terminals User Manual, publication 2711PC-UM002 | Provides information on how to install, configure, operate, and troubleshoot the PanelView Plus 6 Compact terminals. |
| Industrial Automation Wiring and Grounding Guidelines, publication 1770-4.1 | Provides general guidelines for installing a Rockwell Automation® industrial system. |
| Product Certifications website, http://www.ab.com | Provides declarations of conformity, certificates, and other certification details. |

You can view or download publications at <http://www.rockwellautomation.com/literature/>. To order paper copies of technical documentation, contact your local Allen-Bradley distributor or Rockwell Automation sales representative.

Notes:

Rockwell Automation Support

Use the following resources to access support information.

| | | |
|---|---|--|
| Technical Support Center | Knowledgebase Articles, How-to Videos, FAQs, Chat, User Forums, and Product Notification Updates. | www.rockwellautomation.com/knowledgebase |
| Local Technical Support Phone Numbers | Locate the phone number for your country. | www.rockwellautomation.com/global/support/get-support-now.page |
| Direct Dial Codes | Find the Direct Dial Code for your product. Use the code to route your call directly to a technical support engineer. | www.rockwellautomation.com/global/support/direct-dial.page |
| Literature Library | Installation Instructions, Manuals, Brochures, and Technical Data. | www.rockwellautomation.com/literature |
| Product Compatibility and Download Center (PCDC) | Get help determining how products interact, check features and capabilities, and find associated firmware. | www.rockwellautomation.com/global/support/pcdc.page |

Documentation Feedback

Your comments will help us serve your documentation needs better. If you have any suggestions on how to improve this document, complete the How Are We Doing? form at http://literature.rockwellautomation.com/idc/groups/literature/documents/du/ra-du002_-en-e.pdf.

Rockwell Automation maintains current product environmental information on its website at <http://www.rockwellautomation.com/rockwellautomation/about-us/sustainability-ethics/product-environmental-compliance.page>.

Allen-Bradley, CompactLogix, ControlLogix, DH+, FactoryTalk, Integrated Architecture, LISTEN. THINK. SOLVE., MicroLogix, PanelBuilder, PanelView, PLC-5, Rockwell Automation, Rockwell Software, RSLinx, and SLC are trademarks of Rockwell Automation, Inc.

SD and SDHC are trademarks of SD-3C LLC.

Trademarks not belonging to Rockwell Automation are property of their respective companies.

Rockwell Otomasyon Ticaret A.Ş., Kar Plaza İş Merkezi E Blok Kat:6 34752 İçerenköy, İstanbul, Tel: +90 (216) 5698400

www.rockwellautomation.com

Power, Control and Information Solutions Headquarters

Americas: Rockwell Automation, 1201 South Second Street, Milwaukee, WI 53204-2496 USA, Tel: (1) 414.382.2000, Fax: (1) 414.382.4444

Europe/Middle East/Africa: Rockwell Automation NV, Pegasus Park, De Kleetlaan 12a, 1831 Diegem, Belgium, Tel: (32) 2 663 0600, Fax: (32) 2 663 0640

Asia Pacific: Rockwell Automation, Level 14, Core F, Cyberport 3, 100 Cyberport Road, Hong Kong, Tel: (852) 2887 4788, Fax: (852) 2508 1846

Publication 2711P-TD005I-EN-P - February 2020

Supersedes Publication 2711P-TD005H-EN-P - March 2018

Copyright © 2020 Rockwell Automation, Inc. All rights reserved. Printed in the U.S.A.