

PanelView 5000 Portfolio of Graphic Terminals

Featuring Studio 5000 View Designer Software

To help you optimize productivity, Allen-Bradley has expanded the PanelView™ 5000 portfolio of graphic terminals and Studio 5000 View Designer® software. Studio 5000 View Designer software is included as part of the Studio 5000 Automation Engineering & Design Environment® software.

It allows engineers to enter configuration information only once and leverage it across the entire automation design system. The integration of hardware and software helps you build modern applications more easily and make data-driven decisions faster.

Features and Benefits

Enhanced integration with Logix

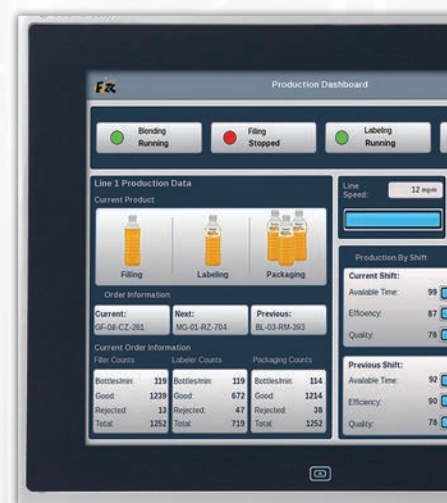
- Logix-based alarms are automatically available, eliminating additional configuration
- High-speed HMI buttons provide quick response and feedback for machine jogging applications
- Logix tag extended property support helps develop richer content

Increased productivity with intuitive design environment

- Intuitive navigation menu reduces configuration time
- Scalable vector graphics automatically adjust objects and screens to any terminal size
- Create custom, re-usable add-on graphics to more efficiently build your applications



Studio 5000 View Designer Software



PanelView 5510 Graphic Terminal



PanelView 5310 Graphic Terminal

LISTEN.
THINK.
SOLVE.

Intuitive, Modern Design

PanelView 5510 Graphic Terminal

The PanelView 5510 graphic terminal was designed for OEMs and end users who require a high degree of integration between their HMI and controller. Wide range of display sizes from 7" to 19" with wide screen, touch and keypad options. EtherNet/IP with DLR and embedded switch technology supports ring topology for network fault tolerance and reduced downtime. A physical navigation button on the terminal easily displays information.

PanelView 5310 Graphic Terminal

The PanelView 5310 touch screen graphic terminal is ideal for OEMs and end users looking for a right-sized visualization solution for their smaller applications. Screen sizes range from 6" to 12." The terminal provides 50 screens, connection to one controller and 1000 alarms. An on-screen navigation button easily displays information.



*Offering a scalable, modern design
with a slim, aluminum bezel*

Improve Operator Performance

With the pre-built content available, you can develop applications faster. The PanelView 5510 was designed with features to maximize the display area, enabling more space for application content. This helps increase operation efficiency and may allow the use of a smaller terminal to address your application.

- A pre-configured system banner provides alarm roll-up and diagnostic indicators to help reduce design time and offer a consistent user experience
- The navigation button displays an intuitive navigation menu that helps optimize screen display area and includes default options for user screens, alarms, settings and diagnostics
- High-speed HMI buttons provide quick response and feedback for machine jogging applications
- Smart run-time error notifications help identify and manage issues quickly



PanelView 5510
Graphic Terminal

Customizable system banner to provide system information on your screens

Easily navigate between operator screens, alarm summary, diagnostics and settings

Pre-built content helps create an easy-to-use view into an application



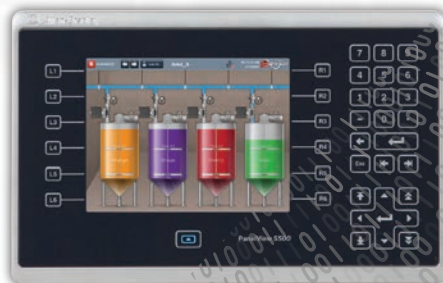
PanelView 5310 Graphic Terminal

Enhanced Logix Integration

The Studio 5000 Logix Designer® and Studio 5000 View Designer applications now have the ability to automatically share tags, alarms and other data – providing new levels of integrated design, operations and maintenance.

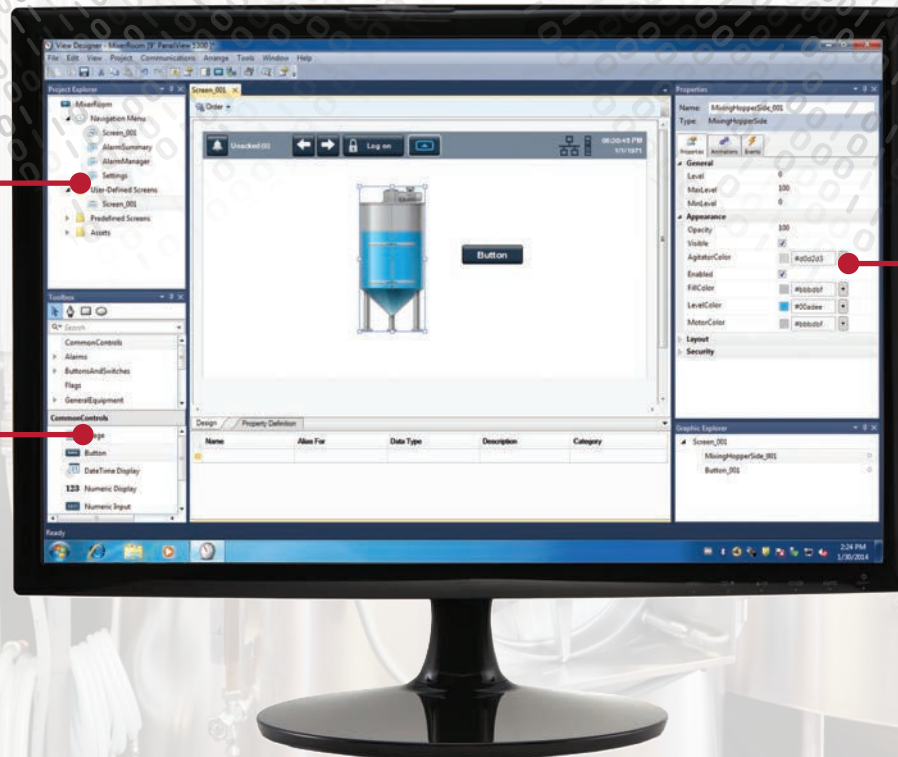
- Shared Logix tags help simplify engineering time by allowing your controller tags to be used in your terminal without having to create HMI tags.

- Logix-based alarms are automatically available on the PanelView 5510 and 5310 graphic terminals to eliminate additional alarm programming and help to reduce network traffic.
- High-speed button control – deterministic and auto diagnosing buttons can interact with the Logix controller at I/O speeds.
- Runtime language switching will switch static screen text, tag descriptions and alarm messages from the Logix controller.



Project Explorer
to easily develop
screens and menus

Searchable toolbox
of graphic elements
for screens



Properties pane to
configure elements
consistently

*Integrated data
sharing between
Studio 5000
View Designer
application and
Logix system*

Studio 5000 View Designer Software



Features

- High-speed HMI button
- Logix-based alarms
- Navigation menu
- State tables
- Real-time trending
- Pre-defined Logix integration content
- Multi-language support with language switching
- Flexible property binding and command actions
- Alignment guides

	PanelView 5510	PanelView 5310
New Studio 5000 View Designer V4 Features		
Application Limits	1 controller, 100 screens, 1000 alarms	1 controller, 50 screens, 1000 alarms
ControlLogix Controller	ControlLogix 5570/5580 controllers (v27+)	
CompactLogix Controller	CompactLogix 5370/5380/5480 controllers (v27+)	
Document and Content Viewers	PDF	
Terminal Emulator	•	
Remote Access/Connectivity	VNC	
Trending	Real-time and historical	
Datalogging	Local only	
Faceplates – Device	•	
Faceplates – Custom (Global Objects/Add-on Graphics)	•	
Load from Removable Media	•	
New Studio 5000 View Designer V5 Features <i>(subject to change)</i>		
Application limits	4 controllers, 100 screens, 1000 alarms	1 controller, 100 screens, 1000 alarms
Support for Logix tag-based alarms	•	•
Auto Log-off	•	•
Alarm Log Viewer	•	
Document and Content Viewers	Existing - PDF	PDF
Video Player	•	

PanelView 5000 Graphic Terminals

	PanelView 5510 Graphic Terminal	PanelView 5310 Graphic Terminal
Display Sizes with Catalog Numbers	7" Touch – 2715P-T7CD 7" Keypad – 2715P-B7CD 7"W – 2715P-T7WD 9" W – 2715P-T9WD 10" Touch – 2715P-T10CD 10" Keypad – 2715P-B10CD 12" W – 2715P-T12WD 15" Touch – 2715P-T15CD 15" Keypad – 2715P-B15CD 19" W – 2715P-T19CD	6" Touch – 2713P-T6CD1 7" W Touch – 2713P-T7WD1 9" W Touch – 2713P-T9WD1 12" W Touch – 2713P-T12WD1 Note: All terminals are available brandless. For brandless catalog numbers, please use 271XP-XXXX-B.
Display Type	Color TFT LCD, 24-bit Color Graphics (16,777,216 colors), LED backlight	
Touch Screen	Analog resistive	
RAM	1 GB	
Nonvolatile Storage	1 GB	
Ethernet	Two 10/100 Base-T, Auto MDI/MDI-X Ethernet ports that support (device-level ring) DLR, linear, or star network topologies	10/100 single Ethernet port
Input Power Options	24V DC nom (18...30V DC)	
Temperature, Operating	7-inch...15-inch terminals: 0...55 °C (32...131 °F) 19-inch terminals: 0...50 °C (32...122 °F)	0...50 °C (32...122 °F)
Certifications	c-UL-us listed; Class 1, Div 2, Groups A, B, C, D; KCC; CE (EMC); CE (LVD); RoHS; RCM	c-UL-us, CE, KC, RCM, EAC, RoHS
Enclosure Ratings	NEMA and UL Type 12, 13, 4X, also rated IP66 as classified by UL, EAC, Marine	NEMA and UL Type 12, 13, 4X, also rated IP66 as classified by UL
Software	Studio 5000 View Designer (Terminals require V4+)	

Allen-Bradley, CompactLogix, ControlLogix, LISTEN. THINK. SOLVE., PanelView, Rockwell Software, Studio 5000, Studio 5000 Automation Engineering & Design Environment and Studio 5000 View Designer are trademarks of Rockwell Automation, Inc. Trademarks not belonging to Rockwell Automation are property of their respective companies.

www.rockwellautomation.com

Power, Control and Information Solutions Headquarters

Americas: Rockwell Automation, 1201 South Second Street, Milwaukee, WI 53204-2496 USA, Tel: (1) 414.382.2000, Fax: (1) 414.382.4444

Europe/Middle East/Africa: Rockwell Automation NV, Pegasus Park, De Kleetlaan 12a, 1831 Diegem, Belgium, Tel: (32) 2 663 0600, Fax: (32) 2 663 0640

Asia Pacific: Rockwell Automation, Level 14, Core F, Cyberport 3, 100 Cyberport Road, Hong Kong, Tel: (852) 2887 4788, Fax: (852) 2508 1846