



# BL-1301

Ultra Small Digital Barcode Reader, Standard Type, Front Raster



\*Please note that accessories depicted in the image are for illustrative purposes only and may not be included with the product.

## Specifications

Model			BL-1301
Type			Standard type
Type	Reading direction	Front	
	Scanning method	Raster	
Laser	Light source	Visible red semiconductor laser (660 nm wavelength)	
	Control output	85 μW	
	Pulse duration	112 μs	
	Laser class	Class 2 Laser Product (IEC60825-1, FDA (CDRH) Part1040.10*1)	
Reading	Supported codes	CODE 39, ITF, Industrial 2of5, Standard 2of5, COOP 2of5, NW-7 (Codabar), CODE 128, GS1-128, CODE 93, EAN/UPC, GS1 DataBar	
	Number of readable digits	74 digits (148 digits with CODE 128 start character C)	
	Readable bar width	0.125 mm to	
	Reading distance	65 to 500 mm*2 (1.0 mm narrow bar width)	
	Focal point	120 mm	
	Largest readable label width	339 mm*2 (350 mm distance, 1.0 mm narrow bar width)	
	PCS	0.4 or more	
	Scanning rate	500 to 1,300 scans/second	
I/O specifications	Input terminals	Number of inputs	Two (IN1, IN2)
		Input format	non-voltage input (contact or solid-state)
	Output terminals	Number of outputs	Four (OUT1 through OUT4)
		Output	NPN open collector
		Rated load	24 VDC, 30 mA
		Leakage current (at OFF)	0.1 mA or less
		Residual voltage (at ON)	0.5 V or less
	Serial interface	Communication method	Conforms to EIA, RS-232C
		Communication speed	600, 1,200, 2,400, 4,800, 9,600, 19,200, 31,250, 38,400, 57,600, 115,200 bps
		Synchronisation between the transmitter and receiver	Asynchronous
		Data bit length	7/8 bits
		Stop bit length	1/2 bits
		Parity check	None/Even/Odd
Rating	Power voltage		5 VDC ±5 %

Environmental resistance	Voltage consumption	400 mA or less
	Enclosure rating	IP65
	Ambient light	10,000 lux (sunlight), 6,000 lux (Incandescent lamp)
	Ambient temperature	0 to +45 °C
	Relative humidity	35 to 85 % RH (No condensation)
	Storage temperature	-20 to +60 °C
	Operating environment	No dust or corrosive gas present
	Vibration resistance	10 to 55 Hz, Double amplitude 1.5 mm, 2 hours in each of the X, Y, and Z directions
Weight		Approx. 115 g

\*1 The laser classification for FDA (CDRH) is implemented based on IEC60825-1 in accordance with the requirements of Laser Notice.

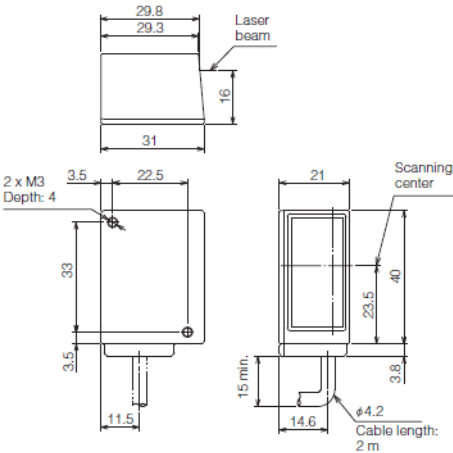
\*2 Specifications for 500-scan/second operation  
Use the Limited Power Source defined in UL/IEC60950-1 to comply with UL/IEC60950-1.  
Internal body settings are written in the internal memory area (can be rewritten 100,000 times).

Dimensions

\* Download CAD file or product manual for larger image/text and more detail.

BL-1300\_dimension\_01.gif

● Main unit (BL-1300/1301/1300HA/1301HA/1370/1371)



BL-1300\_frontscanning\_dimension\_01.gif

