



GT2-71D

Amplifier Unit, Pulse Output Type



*Please note that accessories depicted in the image are for illustrative purposes only and may not be included with the product.

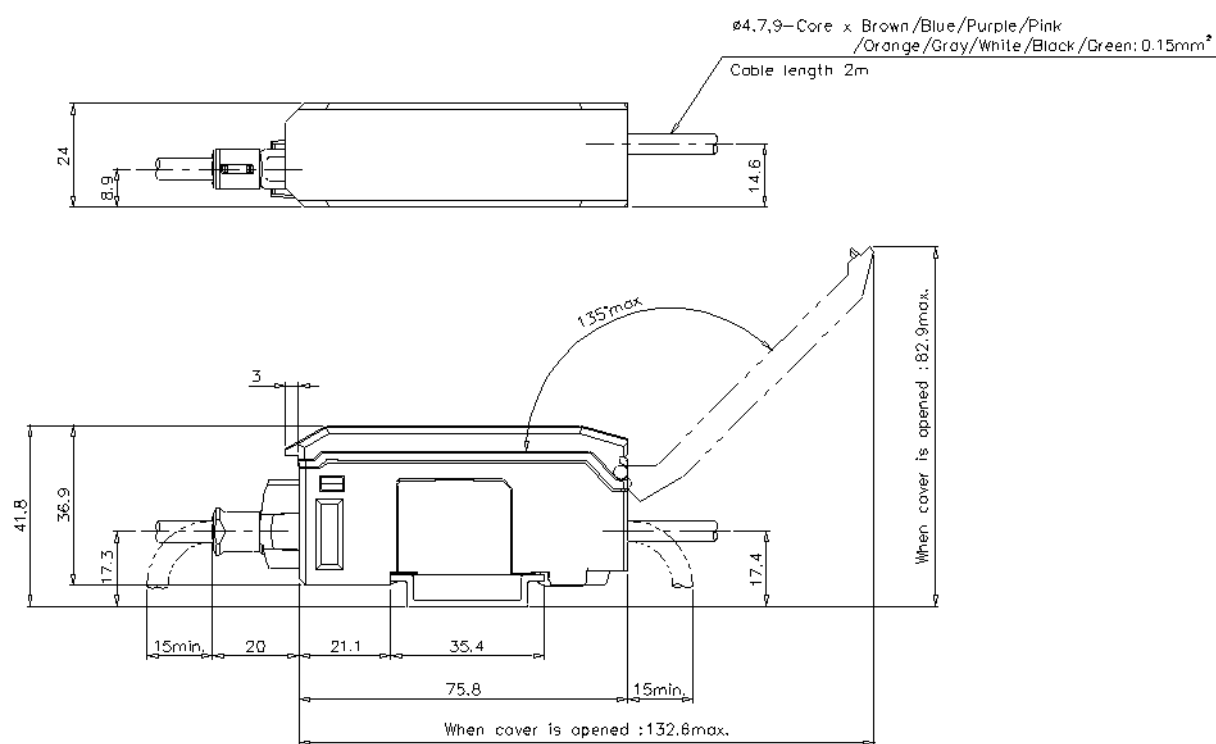
Specifications

Model		GT2-71D
Mounting type		DIN-rail mount
Current consumption		1,600 mW (30 V, 53.3 mA max.)
Number of expandable units		Cannot be extended
Indicator lamp		Power supply (green)/Alarm (red) indicator, pulse output indicator (green), input indicator (green)
Pulse resolution		Selectable from 0.1 μm , 0.5 μm , 1 μm, and 10 μm (Factory setting: 0.5 μm)
Minimum phase difference		Selectable from 0.5 μs, 2.5 μs, 5 μs, and 25 μs (Factory setting: 2.5 μs)
Control input	origin return	Input time: 20 ms min.
Output signal		90 ° phase difference, differential square wave (EIA-422 compliant)
Output signal level		+5 V, 0A, 0A-, 0B, 0B-, 0Z, 0Z-: Line driver output
Environmental resistance	Ambient temperature	-10 to +50 °C (No freezing)
	Relative humidity	35 to 85 % RH (No condensation)
	Vibration resistance	10 to 55 Hz, Double amplitude 1.5 mm, 2 hours in each of the X, Y, and Z directions
Material		Main body case : Polycarbonate, Cable : PVC
Weight		Approx. 110 g (including power supply cable)

Dimensions

* Download CAD file or product manual for larger image/text and more detail.

GT2-71D

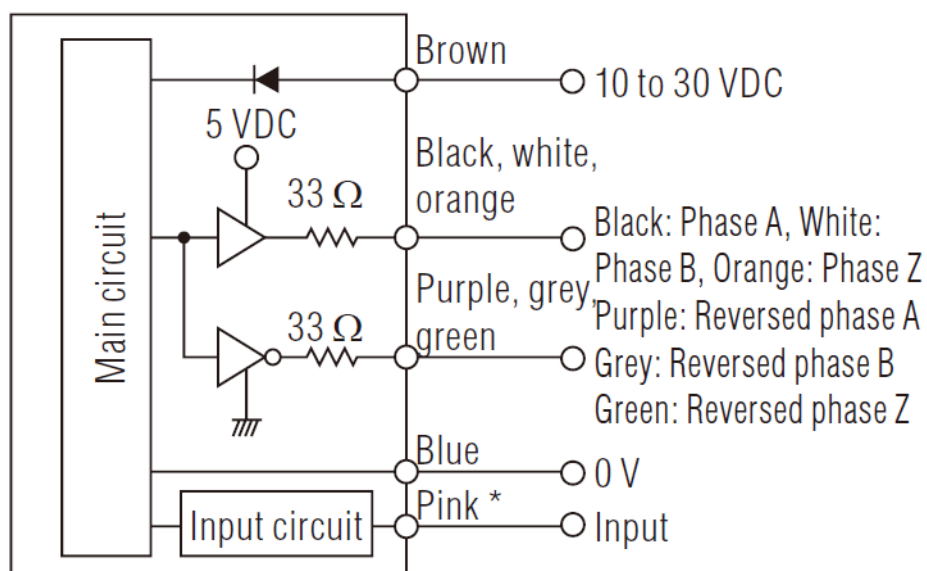


I/O Circuit Connection diagram

* Download CAD file or product manual for larger image/text and more detail.

Pulse output amplifier unit (GT2-71D)

I/O circuit



* For details of the external input, refer to the diagram of the external input circuit.

Pulse output amplifier unit (GT2-71D)

External input circuit

Recommended input device

