



PZ-G101CP

Square Reflective M8 Connector Type, PNP



*Please note that accessories depicted in the image are for illustrative purposes only and may not be included with the product.

Specifications

Model		PZ-G101CP
Type		Diffuse Reflective Narrow view reflective
Shape		Rectangular
Output		PNP
Cable connection		M8 connector *1
Detecting distance		200 mm
Spot diameter		Approx. 5 mm dia. (At a detecting distance of 100 mm)
Light source		Red LED
Sensitivity adjustment		1-turn trimmer (230°)
Response time		500 μs
Operation mode		LIGHT-ON/DARK-ON (switch-selectable)
Indicators (LED)		Output : Orange LED, Stable operation : Green LED
Control output		Open collector output, 30 V max., 100 mA max., Residual voltage : 1 V max.
Protection circuit		Reversed polarity, overcurrent protection, surge absorber
Interference suppression		Up to 2 units (with the automatic different frequency function)
Tightening torque		Rectangular models (Mounting hole part): 0.5 N m max.
Rating	Power voltage	10 to 30 VDC, including Ripple (P-P) 10 %
	Current consumption	34 mA or less
Environmental resistance	Enclosure rating	IEC: IP67/NEMA: 4A, 6, 12/DIN: IP69K
	Ambient light	Incandescent lamp: 5,000 lux max., Sunlight: 20,000 lux max.
	Ambient temperature	-20 to +55 °C (No freezing)
	Relative humidity	35 to 85 % RH (No condensation)
	Vibration resistance	10 to 55 Hz, Double amplitude 1.5 mm, 2 hours in each of the X, Y, and Z directions
	Shock resistance	1,000 m/s ² , 6 times in each of the X, Y, and Z directions
Material	Housing, M18 nut(threaded models only)	Glass-fibre reinforced PBT
	Lens cover	Polyarylate (PAR)
	Trimmer	Glass-fibre reinforced polyamide (PA)
	Case connection	Screw: Nickel-plated iron and zinc, packing: nitrile butadiene rubber (NBR)
	Cable (cable models only)	Polyvinyl chloride (PVC)
	Connector (connector type with cable only)	—
Accessories		Instruction manual

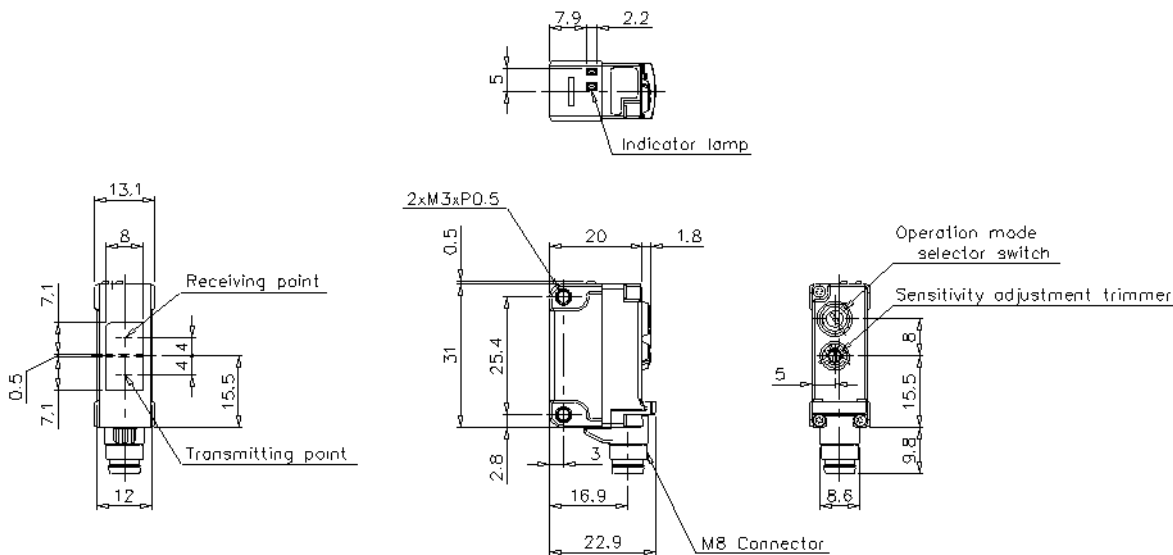
Weight	Rectangular connector models: Approx. 10 g
--------	--

*1 Cable sold separately for connector models

Dimensions

* Download CAD file or product manual for larger image/text and more detail.

PZ-G101CN/G101CP/G102CN/G102CP



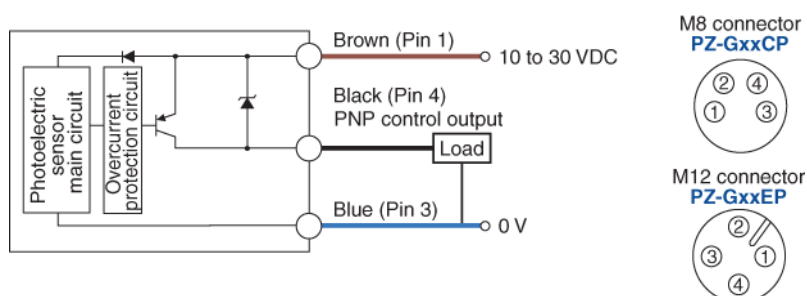
Pin arrangement

①	+V
②	-
③	0V
④	OUT

I/O Circuit Connection diagram

* Download CAD file or product manual for larger image/text and more detail.

PNP output
(thru-beam receiver, reflective, retro-reflective)



Characteristic

* Download CAD file or product manual for larger image/text and more detail.

